

Matting Instructions - AQuA Exhibits 2010
Canyon Voices/Mesa Verde & Silent Auction/Barnes & Noble

Contents of each kit:

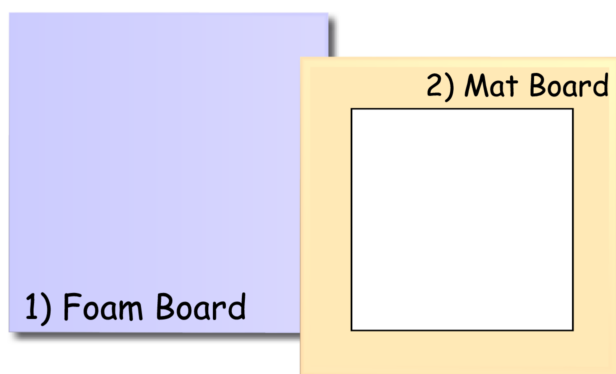
(Shown in color so you can see the images)

Due Dates:

Mesa Verde - June 19th

Silent Auction - Sept. 18th

- 1) 12" x 12" white foam board
- 2) 12" x 12" white mat board with 8" x 8" opening



You will provide:

- 1) 9" x 9" art quilt (minimum size)
- 2) Double-sided permanent acid-free tape
- 3) Small strips of cardboard or mat board to use as shims if needed

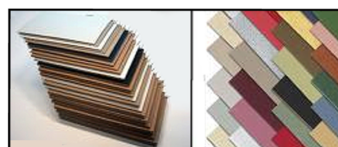
Note: If you complete your matting at the May AQuA meeting, then the tape and shims will be provided at no cost.



1) Art Quilt



2) Tape



3) Cardboard or Mat Board

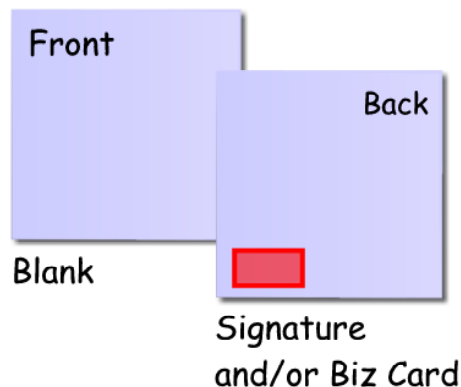
See next page for step by step instructions.

Matting Instructions - AQUA Exhibits 2010

Canyon Voices/Mesa Verde & Silent Auction/Barnes & Noble

1) Prepare the foam board:

On the lower, left-hand corner of the board, you will need to identify yourself as the artist. You may adhere a business card in that corner and/or sign the back with a permanent pen. (This side of the board will be the back.) Now set this aside while you prepare your art quilt for mounting.



2) Prepare finished art quilt for mounting:

Trim it to 9" x 9." This allows for $\frac{1}{2}$ " on all four sides of the piece to be hidden behind the 8" x 8" mat board opening. Please do not trim the work smaller than 9" x 9."



9" x 9"

The edges of the quilt do not need to be bound. The edge finish is up to you; it can be zig-zagged, raw, bound or faced.

Remove all lint and hair from the back of the quilt for mounting.

3) On the top, back edge of the quilt, adhere a piece of the double-sided tape from the left edge to the right edge - & press firmly.

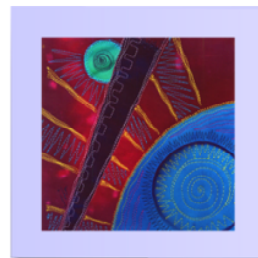


4) Attaching Art Quilt to foam board:

Flip the foam board over so that the business card/signature side is down and the plain side is facing you.

Carefully center the art quilt on the foam board and press firmly along the top edge of the quilt so that the tape holds well. If your quilt is heavy or it does not easily lie flat, then use additional tape on the left & right sides and press firmly.

Press Firmly
to Adhere Tape



Matting Instructions - AQuA Exhibits 2010

Canyon Voices/Mesa Verde & Silent Auction/Barnes & Noble

5) Adhering mat board to foam board:
Next to all four edges of the art quilt, adhere pieces of double-sided tape the full length of the foam board (as shown in pink).



Carefully line up the mat board (that has the 8" x 8" opening) on top of the foam board (that you just taped your quilt to), and press firmly along all four outer edges.

This will keep all the layers secure and keep them from slipping.

6) If your art quilt is THICK:
If the depth of your art quilt is thicker than about 1/8" -- then use some skinny strips of cardboard or mat board as shims. Tape them in the same area where the tape is shown above.

Use the double-sided tape to build up the layers, so that the 12" x 12" mat board will not bow when you tape it to the foam board.



7) The finished piece:
All three layers are now taped securely and are ready to be turned in for jurying

8) Final packaging:
When you turn in your piece, which has been completed through Step No. 7, then AQuA volunteers will finish the packaging by placing the artwork into an acetate sleeve along with your artist statement and bio.

Any questions - Please contact Jan Rickman - 970-931-2231 janrickman@yahoo.com