



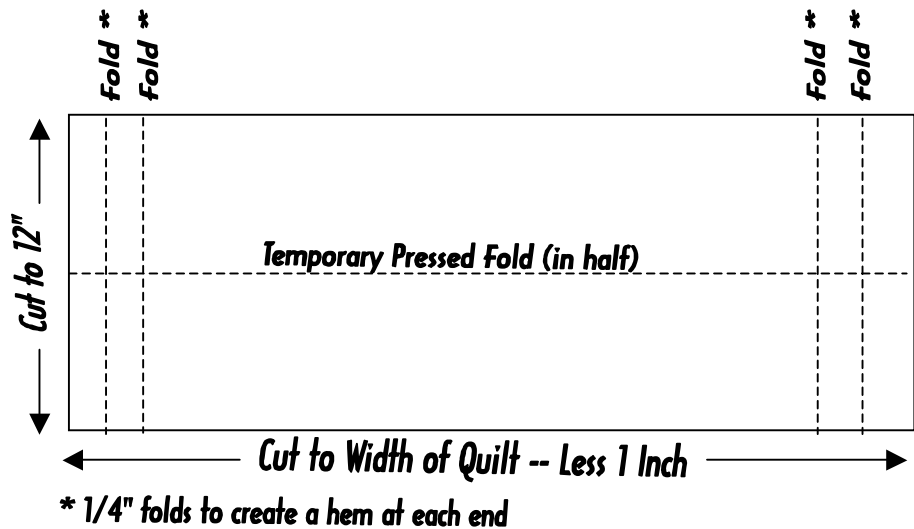
## SLEEVE TO USE WITH ROUND PIPE (UP TO 3" IN DIAMETER)

Cut sleeve fabric: 12" wide by 1" less than the width of your quilt.

Make a narrow double 1/4" hem on each end.

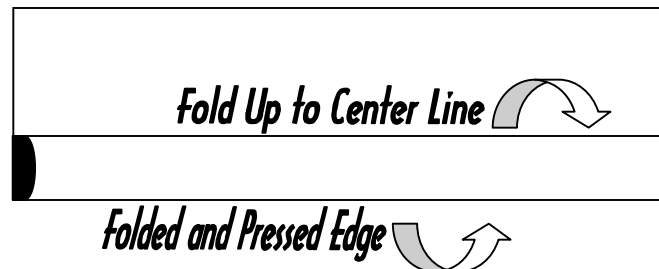
Finished sleeve length will be about 2" narrower/shorter than the width of your quilt.

Fold sleeve in half lengthwise, wrong sides together. Steam Press. This is a temporary guide.



Open sleeve and fold ONE edge to the middle pressed line, wrong sides together.

Steam press this new line very firmly. This is the edge that will be hand-sewn to the 1-3/4" drawn chalk line at the top edge, as explained below.



Open up the fabric, flat, and with wrong sides and raw edges together, stitch along the length of the sleeve using a 1/4" seam allowance. Backstitch the start and stop of this seam.

You have now created a tube. Press this center seam open, being careful not to press over the hand sewing line.

Using chalk or marking pencil, mark a stitch line ("**A**") on the back of the quilt, 1-3/4" from the top edge of quilt **AND** mark another stitch line ("**B**") 4" below "**A**."

Place pressed edge of the sleeve, seam side to the back, along the 1-3/4" marked edge of the quilt. The finished length of the sleeve will be 2" shorter/narrower than the width of the quilt. This will allow the sleeve to be inset 1" on each end and, therefore, neither the sleeve or the slat will be visible on the front of the quilt.

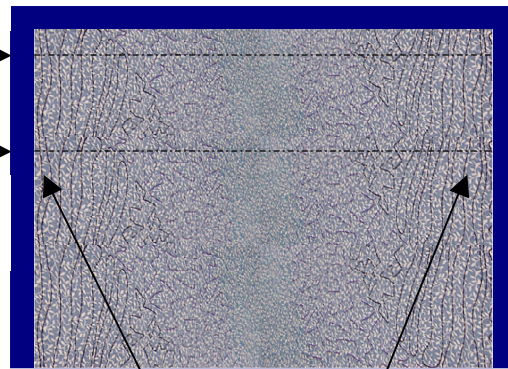
Hand-stitch along the top of the sleeve.

Mark line "**A**"  
1-3/4 inches below  
top edge of quilt

**A**

Mark line "**B**"  
4 inches below  
line "**A**"

**B**

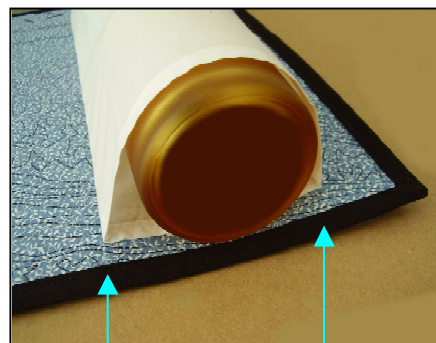


Sleeve will be inset 1" from each

Make a new fold on the sleeve along the lower 4" marked stitch line ("**B**"). Pin in place and hand-sew along the marked bottom edge of the sleeve. The back of the sleeve should lay flat against the back of the quilt.

Finally, hand sew the back of the sleeve along the side edges, to the back of the quilt so there is only one opening for the pipe to go through. As an alternative, fusible web could be used to close up this opening.

The sleeve should roll up almost to the top edge of quilt – but should not show above the top edge.



**B**

Hand-sew  
4" from  
Line "**A**"

**A**

Hand-sew  
1-3/4"  
from top  
edge of  
quilt

Revised March 2011

Adapted for AQuA from THREADPLAY with Libby Lehman